

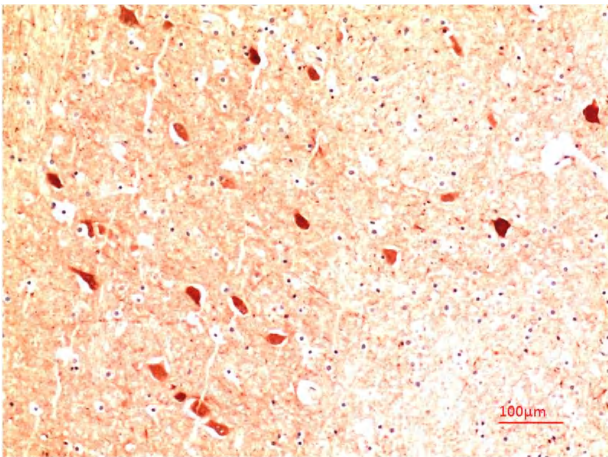


Calretinin Mouse mAb(Mix-mA)

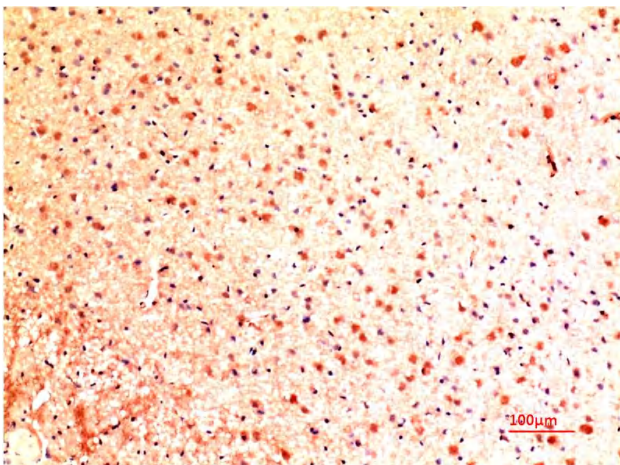
Catalog No	YP-Ab-04790
Isotype	IgG
Reactivity	Human; Mouse;Rat
Applications	IHC
Gene Name	CALB2 CAB29
Protein Name	Calretinin
Immunogen	Synthesized peptide derived from human Calretinin
Specificity	This antibody detects endogenous levels of Calretinin at Human, Mouse,Rat
Formulation	Liquid in PBS containing 50% glycerol, 0.5% BSA and 0.29% sodium azide.
Source	Monoclonal, Mouse
Purification	The antibody was affinity-purified from mouse ascites by affinity-chromatography using specific immunogen.
Dilution	IHC 1:50-200
Concentration	1 mg/ml
Purity	≥90%
Storage Stability	-20°C/1 year
Synonyms	Calretinin (CR) (29 kDa calbindin)
Observed Band	32kD
Cell Pathway	nucleus,cytoplasm,cytosol,gap junction,neuron projection,terminal bouton,synapse,
Tissue Specificity	Brain.
Function	function:Calretinin is a calcium-binding protein which is abundant in auditory neurons.,online information:Calbindin entry,similarity:Belongs to the calbindin family.,similarity:Contains 6 EF-hand domains.,tissue specificity:Brain.,
Background	This gene encodes an intracellular calcium-binding protein belonging to the troponin C superfamily. Members of this protein family have six EF-hand domains which bind calcium. This protein plays a role in diverse cellular functions, including message targeting and intracellular calcium buffering. It also functions as a modulator of neuronal excitability, and is a diagnostic marker for some human diseases, including Hirschsprung disease and some cancers. Alternative splicing results in multiple transcript variants. [provided by RefSeq, Jun 2010],
matters needing attention	Avoid repeated freezing and thawing!

**Usage suggestions**

This product can be used in immunological reaction related experiments. For more information, please consult technical personnel.

Products Images

Immunohistochemical analysis of paraffin-embedded Human Brain Tissue using Calreinin Mouse Monoclonal antibody diluted at 1:200.



Immunohistochemical analysis of paraffin-embedded Mouse Brain Tissue using Calreinin Mouse Monoclonal antibody diluted at 1:200.